

NOTES

CONSTRUCTION

1. ALL EMF SHIELDING IS TO BE INSTALLED OUTSIDE OF THE SUBSTATION
2. THE FIRST POINT OF CALL FOR CONSTRUCTION QUERIES IS THE ELECTRICAL DESIGN GROUP. PH. (07) 3278 4375
BRISBANE@EDG.NET.AU
3. ENERGEX IS TO INSPECT AND APPROVE THE SUBSTATION AND CABLE ROOM 12 WEEKS PRIOR TO THE DATE SUPPLY IS REQUIRED. ONCE APPROVED BY ENERGEX THE ENERGEX SUBSTATION AND CABLE ROOM ARE TO BE HANDED OVER TO ENERGEX

NOTE

EQUIPMENT SCHEDULE

1. REFER TO THE EQUIPMENT SCHEDULE FOR COMPONENT DESCRIPTIONS AND ADDITIONAL REQUIREMENTS.

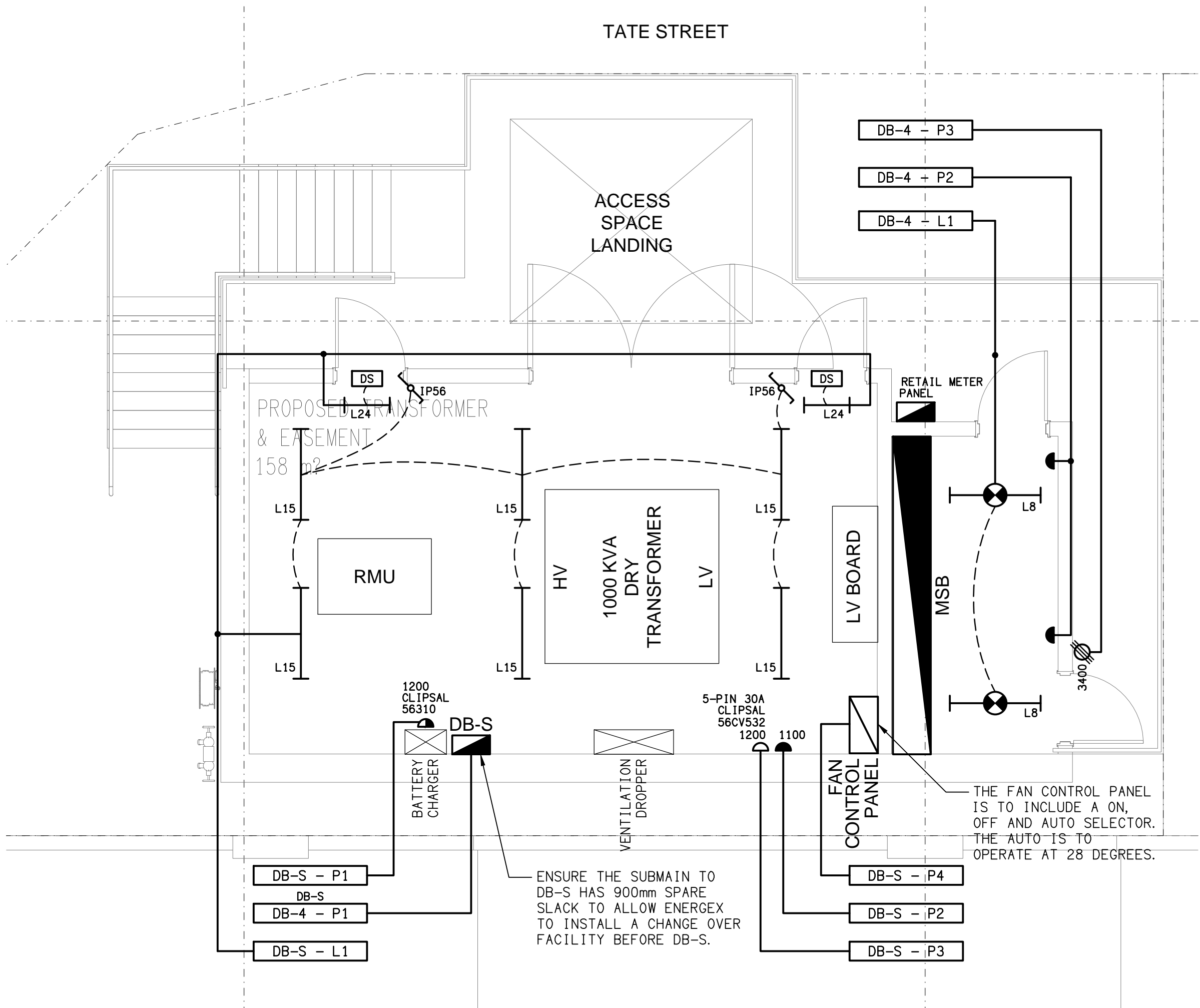
LEGEND

FOR ENERGEX USE ONLY

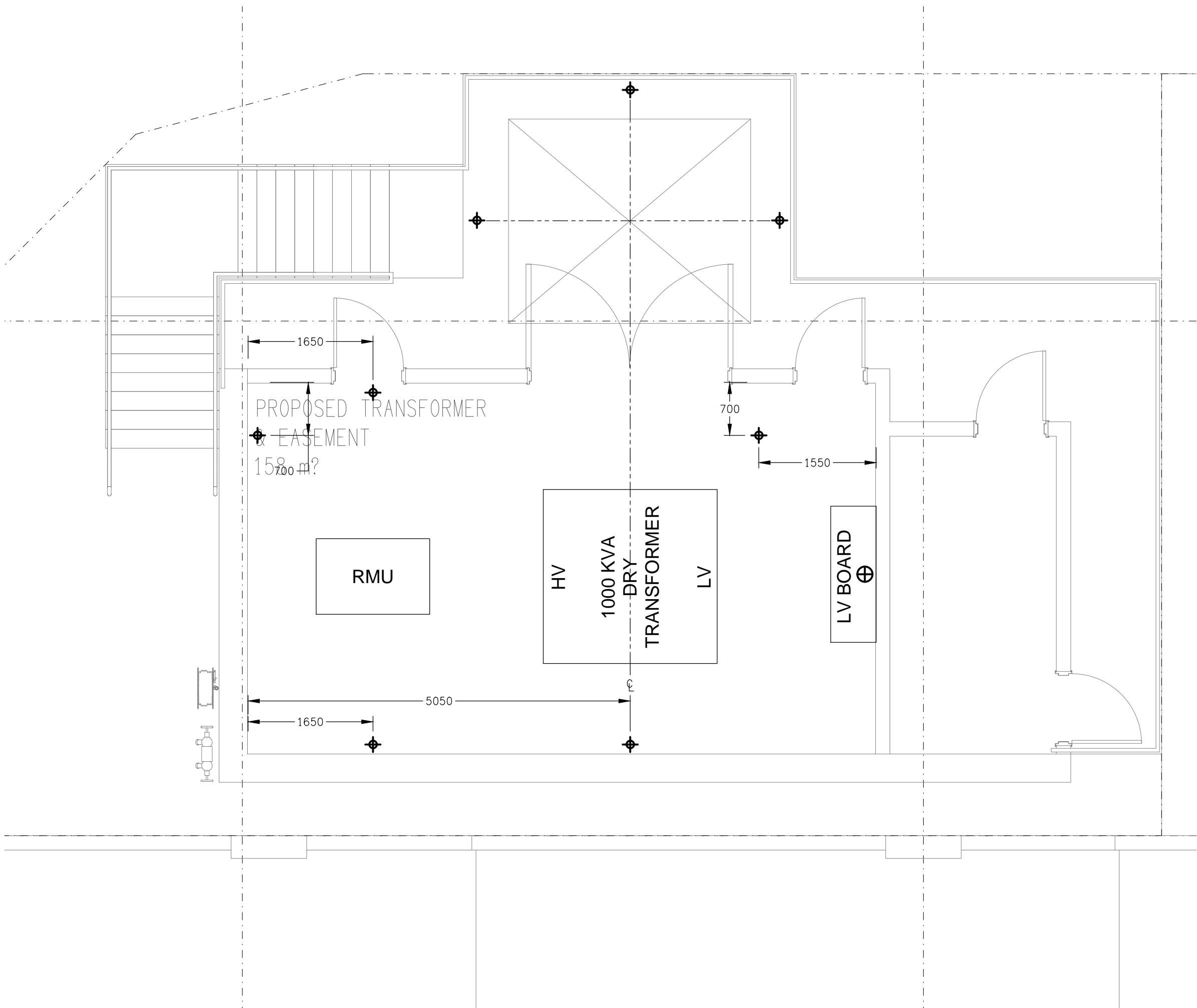
- SINGLE POWER OUTLET.
- DOUBLE POWER OUTLET.
- 3 PHASE SOCKET OUTLET.
- ⊘ 3-PHASE ISOLATOR.
- ⚡ TWO-WAY LIGHT SWITCH.
- DS TWO-WAY DOOR SWITCH.
- L8: 1200 LONG 36W LED BATTEN C/W MOVEMENT SENSOR, SURFACE MOUNT.
- L15: 1200 LONG 36W LED BATTEN, SURFACE MOUNT.
- L24: 600 LONG 20W LED BATTEN, SURFACE MOUNT.

LEGEND

- ⊕ CEILING MOUNTED LIFTING EYE ABOVE LV BOARD, REFER DRAWING E125 DETAIL (4).
- ⚓ FLOOR ANCHOR BY BUILDER, REFER DRAWING E125 DETAIL (3).



ELECTRICAL PLAN
TRANSFORMER ROOM
SCALE 1: 50



ANCHOR & PULLING EYE PLAN
TRANSFORMER ROOM
SCALE 1: 50